



HOW TO START A HARVESTER LIVE EVENT

SIGN IN

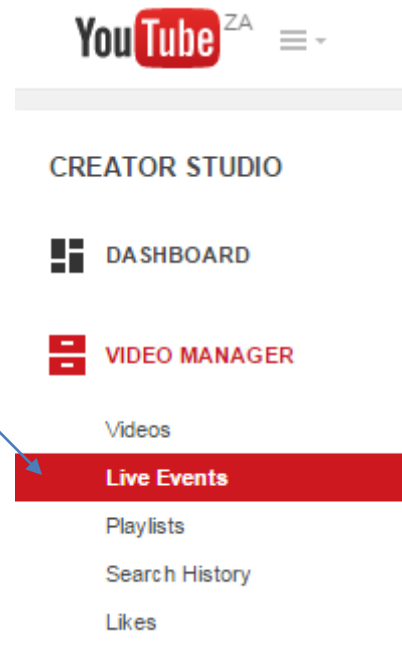
Navigate to www.youtube.com and sign in into Harvester's account.

Once signed into the HRC Milnerton account, go to the YouTube channel.



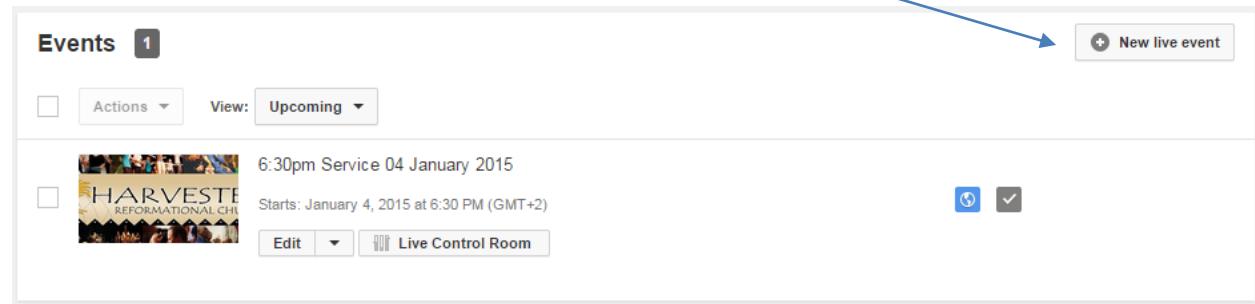
START THE LIVE EVENT

In the section under VIDEO
MANAGER, click on Live Events



START THE LIVE EVENT

In the section under Events you will see which events have been created. To start a new live event, click on New Live Event



START THE LIVE EVENT

Give the live event a meaningful name.

For church services we always start the **name** of the event with the time and date of the service.

Enter the start **time** and enter an **end time**.

Paste the event name into the description and the comment.

Click on **Create event**.

Info and Settings

6:30pm Service 18 January 2015

Cancel Create event

Basic info Advanced settings

6:30pm Service 18 January 2015

Today 7:00pm Add end time

South Africa (GMT +02:00) Johannesburg Edit

6:30pm Service 18 January 2015

6:30pm Service 18 January 2015

Tags (e.g., albert einstein, flying pig, mashup)

Suggested tags: + January 18 (Day Of Year)

Public

Also share on

Type

Quick (using Google+ Hangouts On Air) ?

Custom (more encoding options) ?

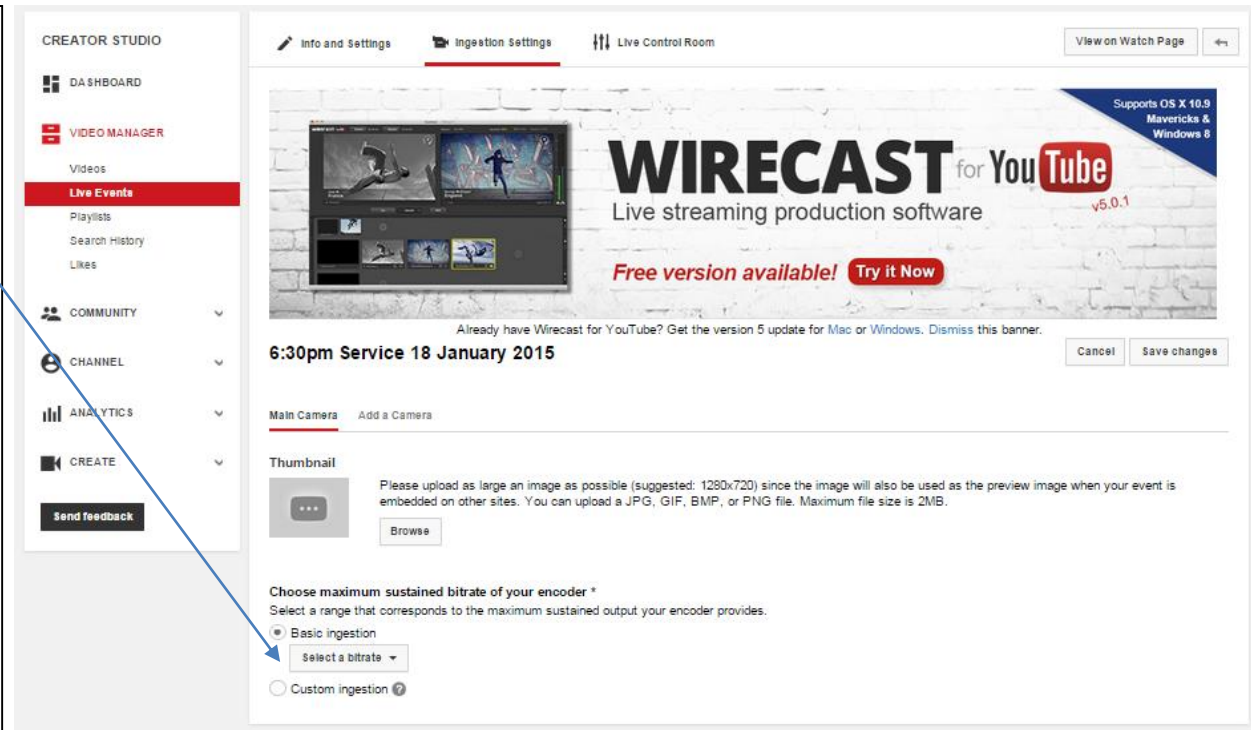
START THE LIVE EVENT

Select a **bitrate** for the streaming.

Select **360p**.

At the moment we are using SD video cameras and our internet is prepaid LTE. The higher the bitrate the more data we use. Currently we are streaming at 360p.

Hopefully we can one day stream 1080p in full HD.



START THE LIVE EVENT

Select a **bitrate** for the streaming.
Select 360p.

Download the Flash Media Live Encoder (FMLE) **profile** XML file. This file needs to be imported into the Adobe Flash Encoder in order to get the streaming settings.

Click on the link "Download Profile (primary)".

6:30pm Service 18 January 2015 Cancel Save changes

Main Camera [Add a Camera](#)

Thumbnail
Please upload as large an image as possible (suggested: 1280x720) since the image will also be used as the preview image when your event is embedded on other sites. You can upload a JPG, GIF, BMP, or PNG file. Maximum file size is 2MB.
[Browse](#)

Choose maximum sustained bitrate of your encoder *
Select a range that corresponds to the maximum sustained output your encoder provides.

Basic ingestion
400 Kbps - 1000 Kbps (360p) ▼

Custom ingestion ?

Select your encoder
YouTube Live provides support for a variety of encoders. Select one of the encoder options below and follow the instructions.

Flash Media Live Encoder (FMLE) ▼

- 1. Download and Install**
Download and install the latest version of FMLE directly from Adobe.
[Download FMLE from Adobe](#)
- 2. Export Settings**
To save you some time, we've packaged the proper settings into two downloadable profiles that can be easily imported into FMLE.
[Download Profile \(primary\)](#) [Download Profile \(backup\)](#)
- 3. Import Profiles**
In the FMLE application, go to File>Open Profile and load the file you downloaded. If you have a backup encoder, you will need to repeat this process. **NOTE: You may encounter a "Profile Validation" warning when importing these profiles into FMLE. This is normal and will not affect your stream or harm your system.**
- 4. Start your encoder**
In your encoder, start sending us your video stream.
- 5. Go to the Live Control Room.**
You can preview and start your event from the [Live Control Room](#).

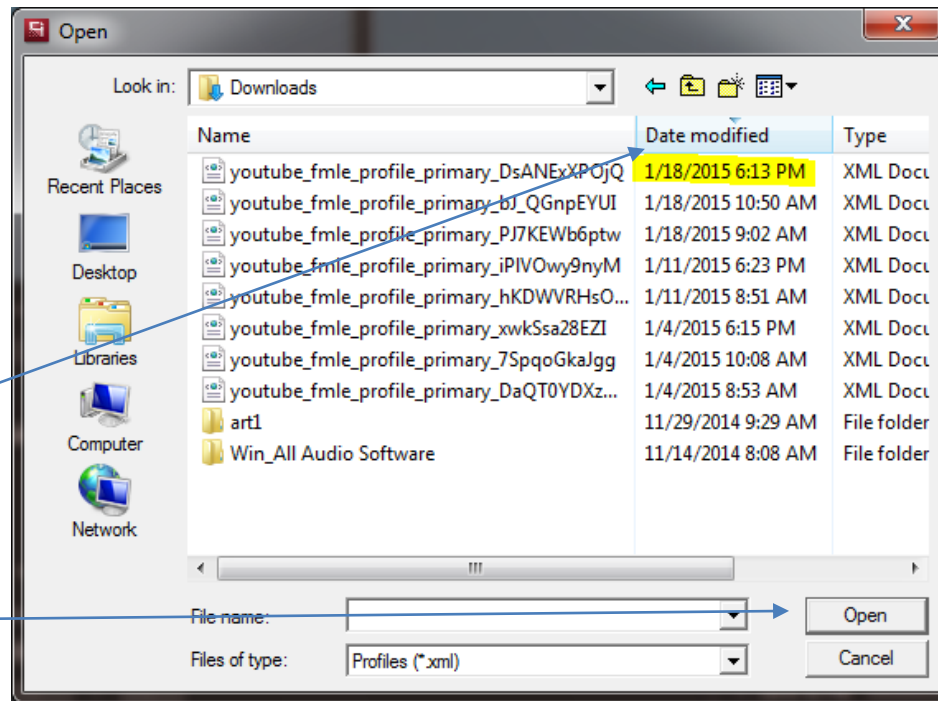
START THE LIVE EVENT

First ensure that the video camera is plugged into the PC and that the camera is powered on before you open the Adobe Flash Media Live Encoder program.

Launch Adobe Flash Media Live Encoder and click on File

Select **Open Profile**.

Navigate to the Downloads folder (there is a shortcut on the desktop to the downloads folder), filter by **Date Modified** so that you see the most recent one on top of the list and select that and click on **Open**.



START THE LIVE EVENT

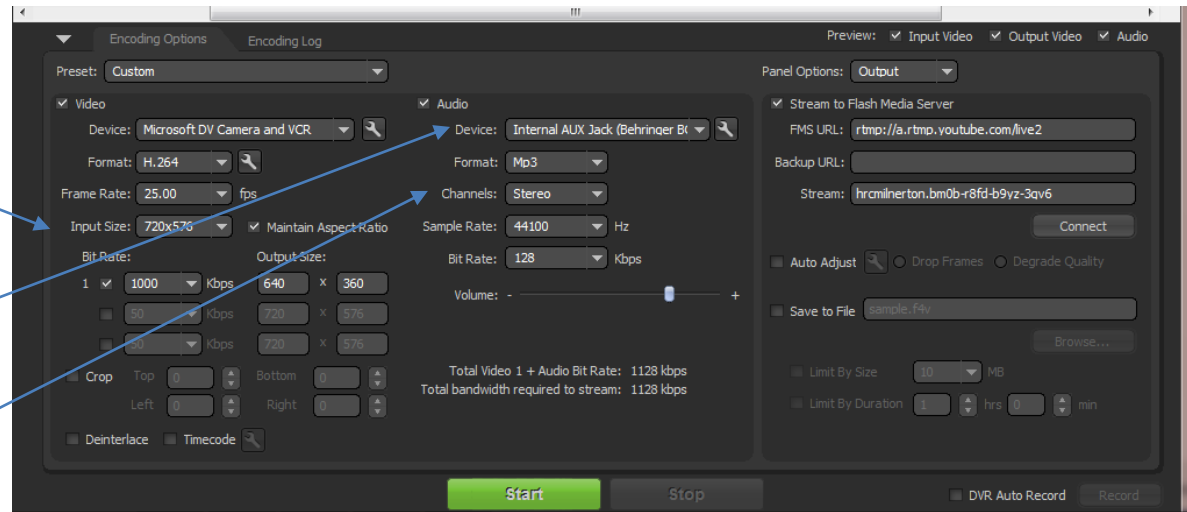
When the XML profile file is loaded, check that the Input Size is the maximum (720x576)

Check that the Audio Device selected is Internal Aux Jack (Behringer)

and that the Channels setting is set to Stereo.

Only when it looks like the worship leader is ready to start, click on **Start**.

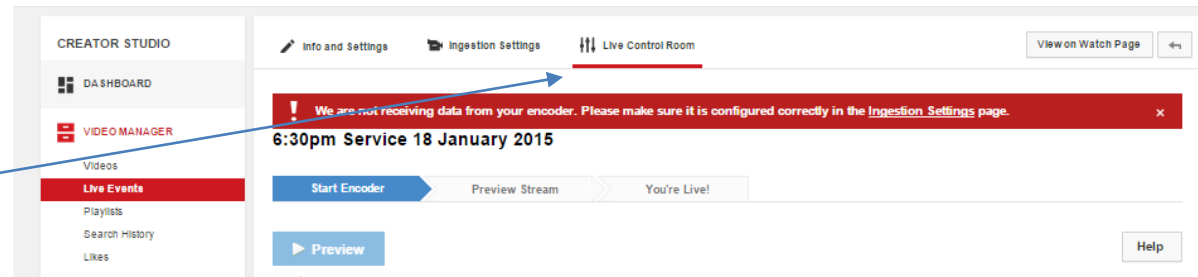
This sends a signal to Youtube where it is received in order to stream.



START THE LIVE EVENT

Go back to your browser
once you clicked the Start
button in Adobe Flash Media
Live Encoder and click on **Live
Control Room**.

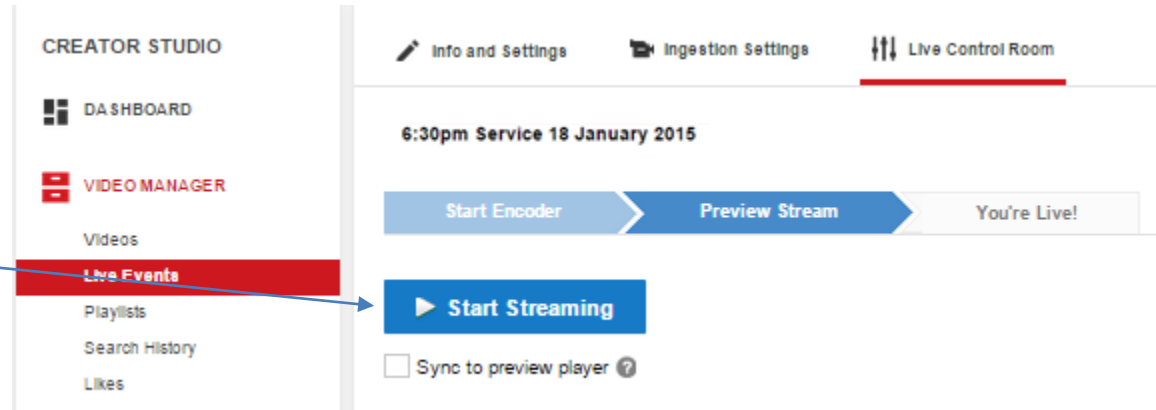
click on **Preview**.



START THE LIVE EVENT

The progress moves on to the Preview Stream phase.

When the worship leader starts the worship session click on **Start Streaming**.



START THE LIVE EVENT

It is important to keep on monitoring the service on a another device (like on a mobile device). You can also view it on the Watch Page.

When the service is finished click on **Stop Streaming** and also Stop on the Flash Media Live Encoder.

